

Commentary

Open Access

Lens stem cells may reside outside the lens capsule: an hypothesis

Susann G Remington*¹ and Rita A Meyer²

Address: ¹Ophthalmology Research, HealthPartners Medical Group and Research Foundation, Regions Hospital, 640 Jackson Street, St. Paul, MN 55101, USA and ²Department of Biomedical Sciences, Creighton University, Criss I, Room 217, 2500 California Plaza, Omaha, NE 68178, USA

Email: Susann G Remington* - susann.g.remington@healthpartners.com; Rita A Meyer - ritameyer@creighton.edu

* Corresponding author

Published: 8 June 2007

Received: 18 December 2006

Theoretical Biology and Medical Modelling 2007, **4**:22 doi:10.1186/1742-4682-4-22

Accepted: 8 June 2007

This article is available from: <http://www.tbiomed.com/content/4/1/22>

© 2007 Remington and Meyer; licensee BioMed Central Ltd.

This is an Open Access article distributed under the terms of the Creative Commons Attribution License (<http://creativecommons.org/licenses/by/2.0>), which permits unrestricted use, distribution, and reproduction in any medium, provided the original work is properly cited.

Abstract

In this paper, we consider the ocular lens in the context of contemporary developments in biological ideas. We attempt to reconcile lens biology with stem cell concepts and a dearth of lens tumors.

Historically, the lens has been viewed as a closed system, in which cells at the periphery of the lens epithelium differentiate into fiber cells. Theoretical considerations led us to question whether the intracapsular lens is indeed self-contained. Since stem cells generate tumors and the lens does not naturally develop tumors, we reasoned that lens stem cells may not be present within the capsule. We hypothesize that lens stem cells reside outside the lens capsule, in the nearby ciliary body. Our ideas challenge the existing lens biology paradigm.

We begin our discussion with lens background information, in order to describe our lens stem cell hypothesis in the context of published data. Then we present the ciliary body as a possible source for lens stem cells, and conclude by comparing the ocular lens with the corneal epithelium.

Background

Lens background

The vertebrate lens is a transparent cellular structure, specialized to focus and transmit light. The lens is composed of two cell types – epithelial cells that form a single cuboidal layer on the anterior surface, and elongated fiber cells that form the posterior bulk of the lens (Figure 1). A capsule of extracellular matrix components encompasses the lens.

The lens grows slowly throughout life, primarily via cell division in the germinative zone. The germinative zone is a narrow cellular region that rings the lens epithelium toward the periphery of the anterior lens surface. Newly formed cells within the germinative zone elongate and migrate along the inner capsular surface toward the lens

equator, forming new lens fiber cells as they continue to elongate and migrate posteriorly beyond the equator. These new fiber cells add to the periphery of the existing fiber cell mass, displacing older fiber cells toward the interior of the expanding lens [1-3]. Central fiber cells are retained for life. Historically, the adult lens has been viewed as a closed system, in which all lens precursor cells or stem cells reside within the capsular confines.

Lens stem cells

We use the following definition of lens stem cells – cells with prolonged self-renewing capacity, that produce one or more differentiated cell types with limited proliferative capabilities [4,5]. In general, stem cells are small, undifferentiated cells that reside in contact with a basement membrane in a protected location known as a stem cell niche.

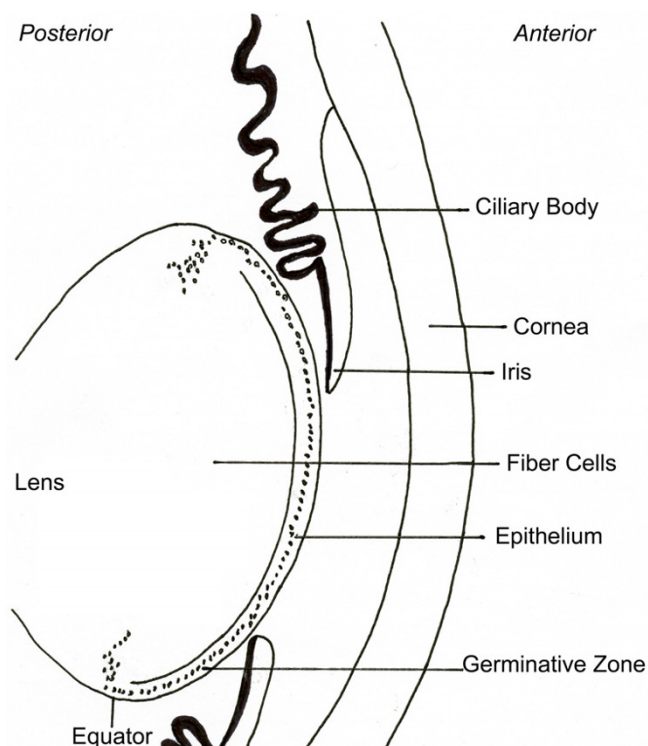


Figure 1
 Lens and anterior eye. Cross sectional diagram of the anterior portion of a developing vertebrate eye, based on a 13-day embryonic chicken eye section (photomicrograph of Sandra Ackerley, University of Guelph).

Infrequent stem cell divisions result in one of two cell outcomes. The new cell either remains in its niche as a stem cell, or leaves as a progenitor cell that migrates from the niche to participate in cell differentiation events. Progenitor cells destined for differentiation increase in number through multiple, finite cell divisions as transit amplifying cells [5-7].

A lifetime of cell division in the lens implies the existence of a lens stem cell population. Typically stem cells reside in a protected niche, which for surface or exposed epithelia is a pigment protected and well vascularized location [8,9]. The lens lacks both pigment and a vascular system. An additional point is that tumors often arise from stem cells [10,11], yet the lens does not develop tumors [12,13].

How might these incongruities be reconciled? We hypothesize that the lens is not a closed system. Specifically, lens stem cells may reside outside the lens capsule. If the adult lens does not contain its own stem cell population, we asked where lens stem cells could exist. The pigmented,

vascularized ciliary body lies in close proximity to the lens germinative zone, located outside of the lens capsule [14-17]. We propose that the ciliary body could serve as a potential source of stem cells for the lens. We will discuss the ciliary body in more detail below.

Discussion

Cell proliferation in the lens

Cells in the lens germinative zone divide throughout life, albeit less frequently with advancing age [14]. Newly divided cells differentiate into fiber cells and add to the periphery of the posterior fiber cell mass. Anterior epithelial cells, if they replicate under normal circumstances, do so infrequently [1-3].

Several observations have supported the idea that lens is a self-contained developmental system. The lens is physically separate from other ocular tissues, and surrounded by a thick capsule of extracellular matrix. The lens is suspended in the eye orbit from the ciliary body by zonular fibrils anchored in the lens capsule. Only two cell types, lens epithelial cells and lens fiber cells, are found within the intact lens. There are no nerves, no blood vessels, and no immune cells within the lens capsule [18,19].

DNA-labeling studies demonstrated that most new lens cells arise in the germinative zone, with a few new cells scattered in the anterior epithelium [14,20-22]. If the lens is a closed system, lens stem cells must reside either in the anterior epithelium or in the more peripheral germinative zone, the only two lens regions with cells that synthesize DNA. As the most rapidly proliferating region and the immediate source of differentiating fiber cells, the germinative zone was often assumed to harbor stem cells for the lens [23]. In support of this argument, the cells in the germinative zone are protected from direct UV radiation by the pigmented iris.

In contrast, cells of the central lens epithelium are exposed to UV radiation that traverses the cornea and aqueous humor. Only a small amount of UVB (the principal DNA damaging wavelengths) reportedly reaches the anterior lens [24], however damage sustained by lens cells could be cumulative [25-27]. A recent long term DNA-labeling study [22] identified the central lens epithelium as the site of the slowest cycling cells in the lens (discussed in more detail below).

Regardless of the actual lens stem cell location, short term labeling studies indicate that the transit amplifying population for the lens resides in the germinative zone. Many transit amplifying cell progeny migrate toward the equator and ultimately differentiate into fiber cells [14,15,21]. Do some transit amplifying cells also migrate centripetally and provide new lens epithelial cells?

Lens cell lineage

If cell migration occurs within the anterior portions of the lens epithelium, the direction of this migration has not been conclusively determined. There is some circumstantial support (enumerated below) for transit amplifying cells of the germinative zone to supply precursors of new epithelial cells, as well as fiber cells. 1) As organisms age, the volume of the lens increases through new fiber cell addition at the lens equator. The growing lens maintains an epithelial cell monolayer over its expanding anterior surface area. While individual lens epithelial cells increase in average size with advancing age, some epithelial cell division is required to maintain the observed cell coverage [23]. New cells are needed in particular toward the periphery of the anterior epithelial region. Transit amplifying cells of the germinative zone are well positioned to fill this need. 2) Apoptosis of lens epithelial cells has been observed in normal and cataractous lenses [28,29]. Extrapolation of estimated apoptosis rates and cell division rates in the central epithelium suggests that replacement epithelial cells originate toward the lens epithelial periphery and migrate centripetally. 3) Injury of cells in the central lens epithelium resulted in increased DNA synthesis within 24 hours in the lens germinative zone. At later time points (four days), DNA synthesis was also observed in more central epithelial cells surrounding the wound [30]. One possible interpretation of these central epithelium wounding studies is that cells from the germinative zone may routinely migrate centripetally to replace damaged epithelial cells. By analogy, limbal cells are the recognized source of new corneal epithelial cells, and central corneal wounding was demonstrated to stimulate limbal cell proliferation [31-33]. 4) In vitro lens cell migration studies performed in an electric field provided indirect support for centripetal migration of lens epithelial cells in vivo [34]. 5) Several other researchers have proposed centripetal migration of lens epithelial cells based on their own diverse experimental observations [35-38].

If transit amplifying cells in the germinative zone provide replacement cells for the anterior epithelium, then cells of the germinative zone would possess differentiation potential for two different lens cell types – epithelial cells and fiber cells. Individual cells may have the potential to differentiate either as epithelial or fiber cells. Alternatively, two distinct precursor cell populations may reside within the lens germinative zone.

Lens stem cell hypothesis

While circumstantial evidence implicates the germinative zone as the source of new cells for lens epithelium as well as for fiber cells, results from a recent study seem to contradict these ideas. Long term DNA-labeling experiments demonstrated that central lens epithelial cells retained

label longer than cells in the lens germinative zone [22]. By analogy with stem cell studies in other adult tissues, the lens cells that retained label for the longest time periods should include the lens stem cell population. If the lens is a closed system, then this experimental evidence suggests that lens stem cells reside in the central epithelium. However, the central lens epithelium lies in the path of UV radiation, an exposed position for a stem cell population from the standpoint of potential DNA damage.

We propose another possible interpretation for long term labeling of cells in the central lens epithelium. If lens stem cells reside outside the capsule, putative lens stem cells would not have been included in the analyses. The heavily labeled central epithelial cells could simply represent cells that had not divided during the course of the experiment, supporting the view that lens epithelial cells divide very infrequently [14,29,39,40]. (Mature fiber cells, which are maintained for life, lose their cell nuclei and hence are not labeled in long term studies.) Since no heavily labeled cells in the lens germinative zone were observed after 12 weeks, one can infer that slow cycling lens stem cells do not reside in the germinative zone. We hypothesize that lens stem cells reside outside the capsule.

Ciliary body, a possible source of lens stem cells

If the encapsulated lens does not contain its own stem cell population, we asked where lens stem cells could reside. The ciliary body is a pigmented and vascularized tissue, that lies physically close to the lens germinative zone [14-16,41]. The ciliary body represents the anterior extension of the choroid, and is situated between the choroid and the iris. The epithelium of the ciliary body consists of two cell layers, an inner non-pigmented epithelium, and an outer pigmented epithelium in intimate contact with capillaries [16]. The ciliary epithelial layers represent anterior extensions of the inner non-pigmented neural retina and the outer pigmented retinal epithelium, respectively. (The terms 'inner' and 'outer' are used in reference to the ocular globe interior.) A recognized stem cell population – the retinal stem cells – resides in the ciliary body [42-44].

At early stages of eye development, the presumptive ciliary body abuts the lens capsule overlying the germinative zone [41,45,46]. As the eye matures, the ciliary body elaborates radial processes, each consisting of the double layered epithelium surrounding a central capillary. Extracellular zonular fibrils extend from the posterior ciliary body and the valley walls and floor of the ciliary processes to the equatorial lens capsule, suspending the lens in the eye orbit. The anterior zonular fibrils insert in the lens capsule in a ring near the lens germinative zone [47]. In the primate adult, the inward extensions or 'hills' of the convoluted ciliary body processes lie within one or two millimeters of the lens capsular surface overlying the lens

germinative zone [16,48]. During accommodation, the ciliary process 'hills' can contact the lens capsule [48,49].

If the ciliary body harbors lens stem cells, then cells within the ciliary body must satisfy two criteria (discussed in more detail below). 1) Some cells must have the potential to differentiate into lens fiber cells, and 2) ciliary body cell progeny must migrate to the lens as lens progenitor cells. We use the term 'lens progenitor cells' to denote stem cell progeny that will differentiate into lens epithelial or fiber cells.

1) In support of lens fiber cell differentiation potential, ciliary body and other pigmented tissues of the eye have the capacity to develop lentoids in culture [50-54]. Lentoids are groups of cells that express lens fiber cell proteins, such as crystallins, and exhibit lens fiber cell features, such as enlarged transparent cytoplasm. We surmise that the 'retinal' stem cell population could include stem cells with the potential to differentiate into lens.

Another phenomenon – lens regeneration in the newt – also supports the concept of an extracapsular or extralenticular source of lens progenitor cells. Within a few days after loss of the ocular lens in adult urodeles, a new lens begins to emerge from the pigmented iris [55-57]. In both lentoid formation and lens regeneration, the mechanism has been attributed to transdifferentiation of pigmented epithelial cells [56,58]. While we favor ciliary body stem cells as a potential source of lens progenitor cells, transdifferentiation would be a compatible mechanism.

2) The second criterion for the existence of extracapsular lens stem cells involves cell migration. During development, the presumptive ciliary body abuts the lens capsule [41,45,46]. Early migrating lens progenitor cells would have to exit the ciliary body and traverse the immature lens capsule overlying the lens germinative zone. In the adult eye, migration of cells from the ciliary body to the lens would require committed lens progenitor cells to traverse a short acellular distance of aqueous humor between the ciliary body and the lens, as well as traverse the extracellular matrix of the capsule.

Cell migration is an integral part of developmental systems. In the corneal epithelium for example, limbal stem cell progeny migrate centripetally to populate the corneal surface [59-61]. In the case of the lens, extracapsular lens progenitor cells would need to traverse the aqueous humor in the vicinity of the zonular fibrils. If prospective migrating cells require a physical scaffold for migration, support could be provided by the zonular fibrils, which reach the lens from the valleys of the convoluted ciliary processes [47,62,63]. (For example, cell migration occurs

along extracellular matrix fibrils during cardiac development [64]).

The lens capsule itself may provide a formidable cell migration barrier along much of its surface area, however, entry to the lens capsular interior would need to occur only in a limited area near the germinative zone. The lens capsule is not uniform. It differs in thickness and composition between the anterior and posterior surfaces [65-68]. Additional compositional differences near the germinative zone can be inferred from lectin labeling studies [66]. Zonular fibrils interdigitate into the lens capsule structure in the vicinity of the germinative zone [62,69,70]. Zonular fibril tracks might provide lens capsule entry points, as well as a cell migration substrate. We speculate that extralenticular cells could have access to the lens capsular interior via zonular fibril tracks. We are not aware of experimental data to support cell migration into a lens possessing an intact capsule.

Posterior capsule opacification

If the continuity of the lens capsule is breached, however, extralenticular cell migration into the area delimited by the lens capsule likely occurs. Cataract extraction disrupts the lens capsule. Subsequent cell growth and migration on the remaining capsule lead to complications in 25% of adult patients (and nearly 100% of pediatric patients) that again compromise vision [71-73]. These complications, known as after-cataract or posterior capsule opacification, are believed to primarily involve proliferation and migration of lens epithelial cells left behind during cataract surgery [74-77]. There is also evidence that cells originating in non-lens ocular tissues participate in cell aggregates within the remaining capsule [78-80].

In posterior capsule opacification, the majority of aberrant cell growth is attributed to lens cells originating within the capsule. However, if our hypothesis is correct that lens stem cells normally reside outside the lens capsule, then much of this aberrant growth may actually arise from lens progenitor cells that migrate to the capsule after the cataract surgery.

Analogies to corneal epithelium

If our lens literature summary seems contrived to explain an improbable lens stem cell hypothesis, consider the corneal epithelium. Like the lens, the corneal epithelium is a transparent, avascular ocular tissue, specialized to focus and transmit light [81]. One major difference between cornea and lens is that the cornea also provides a protective surface for the eye. In its protective role at the environment interface, the corneal epithelium has well developed tissue replacement capabilities to repair normal wear and minor injuries [82,83]. In contrast, lens cell division occurs on a more limited scale.

Corneal epithelial stem cells reside in the limbus, a pigmented and vascularized tissue that inhabits the peripheral boundary of the cornea at its junction with the conjunctiva [31,33,84-86]. The intact limbus forms a barrier to the migration of cells from the adjacent conjunctival epithelium [87,88]. Committed corneal epithelial cells originate in the limbus and migrate centripetally along the basal lamina to populate the basal layer of the corneal epithelium [61]. In the cornea, basal cells represent transit amplifying cells, which continue to divide providing renewed layers of differentiated corneal epithelium [6,89]. Basal corneal epithelial cells rarely, if ever, become tumors, despite their ability to replicate their DNA and divide. Most tumors observed in the cornea originate in the limbus and grow to impinge on adjacent corneal tissue [11,90,91].

There are many similarities between the established biology of the corneal epithelium, and our hypothesized source of lens stem cells. Analogous to the cornea, we propose that lens stem cells reside in a protected location – the pigmented, vascularized ciliary body. Non-lens cells do not indiscriminately migrate through the lens capsule. However, committed lens progenitor cells would need to migrate to the lens inner capsular surface (basal lamina) to populate the germinative zone. Transit amplifying cells in the lens germinative zone would subsequently differentiate and migrate as new fiber cells along the inner surface of the equatorial capsule. (Other transit amplifying cells could follow an alternative differentiation pathway and migrate centripetally as new lens epithelial cells along the inner surface of the anterior capsule.) Analogous to committed cells in the basal layer of the corneal epithelium, cells in the lens germinative zone continue to replicate their DNA, yet maintain their commitment to lens cell differentiation. Lens cells do not naturally develop tumors.

Conclusion

In light of concepts that have evolved in stem cell literature in recent years, we re-examine the ocular lens in the context of features common to other biological tissues. Since the lens grows throughout life and does not naturally develop tumors, we ask whether lens stem cells could reside in a more typical stem cell niche, one that is pigmented and vascularized. We hypothesize that lens stem cells reside outside the lens capsule in nearby pigmented ocular tissue, the ciliary body. Here, we present our review of the lens literature from this novel perspective.

We conclude that a postulated extracapsular source of ocular lens stem cells is consistent with a large body of literature. Future experiments on lens development, stem cell biology, cell migration, and ocular oncology may shed light on the robustness of these concepts. In the meantime, we hope that our provocative ideas will stimu-

late discussion in the fields of lens and ocular biology, and encourage the consideration of experimental results from multiple perspectives.

Competing interests

The author(s) declare that they have no competing interests.

Authors' contributions

SGR conceived the hypothesis, researched the literature, and drafted the manuscript. RAM participated in literature research and interpretation, refined the ideas, and helped prepare the manuscript. Both authors read and approved the final manuscript.

Acknowledgements

J. Daniel Nelson, M.D., for his commitment to scientific inquiry.

References

- Papaconstantinou J: **Molecular aspects of lens cell differentiation.** *Science* 1967, **156**:338-346.
- Maisel H, Harding CV, Alcalá JR, Kuszak JR, Bradley R: **The morphology of the lens.** In *Molecular and Cellular Biology of the Eye Lens* Edited by: Bloemendal H. New York, J Wiley and Sons; 1981:49-84.
- Piatigorsky J: **Lens differentiation in vertebrates. A review of cellular and molecular features.** *Differentiation* 1981, **19**:134-153.
- Potten CS, Schofield R, Lajtha LG: **A comparison of cell replacement in bone marrow, testis and three regions of surface epithelium.** *Biochim Biophys Acta* 1979, **560**:281-299.
- Watt FM, Hogan BLM: **Out of Eden: stem cells and their niches.** *Science* 2000, **287**:1427-1430.
- Miller SJ, Lavker RM, Sun TT: **Keratinocyte stem cells of cornea, skin and hair follicle: common and distinguishing features.** *Sem Dev Biol* 1993, **4**:217-240.
- Fuchs E, Tumber T, Guasch G: **Socializing with the neighbors: stem cells and their niche.** *Cell* 2004, **116**:769-778.
- Cotsarelis G, Sun TT, Lavker RM: **Label-retaining cells reside in the bulge area of pilosebaceous unit: implications for follicular stem cells, hair cycle, and skin carcinogenesis.** *Cell* 1990, **61**:1329-1337.
- Lavker RM, Sun TT: **Epidermal stem cells: properties, markers, and location.** *Proc Nat Acad Sci USA* 2000, **97**:13473-13475.
- Reya T, Morrison SJ, Clarke MF, Weissman IL: **Stem cells, cancer, and cancer stem cells.** *Nature* 2001, **414**:105-111.
- Miller SJ, Lavker RM, Sun TT: **Interpreting epithelial cancer biology in the context of stem cells: tumor properties and therapeutic implications.** *Biochim Biophys Acta* 2005, **1756**:25-52.
- Sachs E, Larsen RL: **Cancer and the lens.** *Am J Ophthalmol* 1948, **31**:561-564.
- Seigel GM, Kummer A: **The enigma of lenticular oncology.** *Digital Journal of Ophthalmology* 2002, **7**:1-6 [<http://www.djo.harvard.edu/>].
- Hanna C, O'Brien JE: **Cell production and migration in the epithelial layer of the lens.** *Arch Ophthalmol* 1961, **66**:103-107.
- Mikulicich AG, Young RVV: **Cell proliferation and displacement in the lens epithelium of young rats injected with tritiated thymidine.** *Invest Ophthalmol* 1963, **2**:344-354.
- Streeten BW: **Ciliary body.** In *Ocular Anatomy, Embryology, and Teratology* Edited by: Jakobiec FA. Philadelphia, Harper & Row, Publishers; 1982:303-330.
- Zelenka PS, Gao CY, Rampalli A, Arora J, Chauthaiwale V, He HY: **Cell cycle regulation in the lens: proliferation, quiescence, apoptosis and differentiation.** *Prog Retin Eye Res* 1997, **16**:303-322.
- Hogan MJ, Alvarado JA, Weddell JE: **Lens.** In *Histology of the Human Eye: An Atlas and Textbook* Philadelphia, W B Saunders; 1971:638-677.
- Worgul BV: **Lens.** In *Ocular Anatomy, Embryology, and Teratology* Edited by: Jakobiec FA. Philadelphia: Harper & Row; 1982:355-389.

20. Pearsons BJ, Modak SP: **The pattern of DNA synthesis in the lens epithelium and the annular pad during development and growth of the chick lens.** *Exp Eye Res* 1970, **9**:144-151.
21. Rafferty NS, Rafferty KA: **Cell population kinetics of the mouse lens epithelium.** *J Cell Physiol* 1981, **107**:309-315.
22. Zhou M, Lieberman J, Xu J, Lavker RM: **A hierarchy of proliferative cells exists in mouse lens epithelium: implications for lens maintenance.** *Invest Ophthalmol Vis Sci* 2006, **47**:2997-3003.
23. Kuszak JR: **A re-examination of primate lens epithelial cell size, density and structure as a function of development, growth and age.** *Nova Acta Leopoldina* 1997, **75**:45-66.
24. Sliney DH: **How light reaches the eye and its components.** *Int J Toxicol* 2002, **21**:501-509.
25. Taylor HR, West SK, Rosenthal FS, Muñoz B, Newland HS, Abbey H, Emmett EA: **Effect of ultraviolet radiation on cataract formation.** *N Engl J Med* 1988, **319**:1429-1433.
26. Michael R, Vrensen GFJM, van Marle J, Löfgren S, Söderberg PG: **Repair in the rat lens after threshold ultraviolet radiation injury.** *Invest Ophthalmol Vis Sci* 2000, **41**:204-212.
27. Bhat SP: **The ocular lens epithelium.** *Biosci Rep* 2001, **21**:537-563.
28. Ishizaki Y, Voyvodich JT, Burne JF, Raff MC: **Control of lens epithelial cell survival.** *J Cell Biol* 1993, **121**:899-908.
29. Li WC, Kuszak JR, Dunn K, Wang RR, Ma W, Wang GM, Spector A, Leib M, Cotliar AM, Weiss M, Espy J, Howard G, Farris RL, Auran J, Donn A, Hofeldt A, Mackay C, Merriam J, Mittl R, Smith TR: **Lens epithelial cell apoptosis appears to be a common cellular basis for non-congenital cataract development in humans and animals.** *J Cell Biol* 1995, **130**:169-181.
30. Rakic JM, Galand A, Vrensen GFJM: **Separation of fibres from the capsule enhances mitotic activity of human lens epithelium.** *Exp Eye Res* 1997, **64**:67-72.
31. Cotsarelis G, Cheng SZ, Dong G, Sun TT, Lavker RM: **Existence of slow-cycling limbal epithelial basal cells that can be preferentially stimulated to proliferate: implications on epithelial stem cells.** *Cell* 1989, **57**:201-209.
32. Tseng SCG: **Regulation and clinical implications of corneal epithelial stem cells.** *Mol Biol Rep* 1996, **23**:47-58.
33. Lehrer MS, Sun TT, Lavker RM: **Strategies of epithelial repair: modulation of stem cell and transit amplifying cell proliferation.** *J Cell Sci* 1998, **111**:2867-2875.
34. Wang E, Zhao M, Forrester JV, McCaig CD: **Bi-directional migration of lens epithelial cells in a physiological electrical field.** *Exp Eye Res* 2003, **76**:29-37.
35. Coulombre JL, Coulombre AJ: **Lens development: fiber elongation and lens orientation.** *Science* 1963, **142**:1489-1490.
36. Philpott GW, Coulombre AJ: **Lens development. II. The differentiation of embryonic chick lens epithelial cells in vitro and in vivo.** *Exp Cell Res* 1965, **38**:635-644.
37. Genis-Galvez JM, Santos-Gutierrez L, Rios-Gonzales A: **Causal factors in corneal development: an experimental analysis in the chick embryo.** *Exp Eye Res* 1967, **6**:48-56.
38. Kuszak JR, Costello MJ: **The structure of the vertebrate lens.** In *Development of the ocular lens* Edited by: Lovicu FJ and Robinson ML. Cambridge, UK, Cambridge University Press; 2004:71-118.
39. Hanna C, Bicknell DS, O'Brien JE: **Cell turnover in the adult human eye.** *Arch Ophthalmol* 1961, **65**:695-698.
40. Harocopos GJ, Alvares KM, Kolker AE, Beebe DC: **Human age-related cataract and lens epithelial cell death.** *Invest Ophthalmol Vis Sci* 1998, **39**:2696-2706.
41. Napier HRL, Kidson SH: **Proliferation and cell shape changes during ciliary body morphogenesis in the mouse.** *Dev Dyn* 2005, **233**:213-223.
42. Ahmad I, Tang L, Pham H: **Identification of neural progenitors in the adult mammalian eye.** *Biochem Biophys Res Comm* 2000, **270**:517-521.
43. Fischer AJ, Reh TA: **Identification of a proliferating marginal zone of retinal progenitors in postnatal chickens.** *Dev Biol* 2000, **220**:197-210.
44. Tropepe V, Coles BL, Chiasson BJ, Horsford DJ, Elia AJ, McInnes RR, van der Kooy D: **Retinal stem cells in the adult mammalian eye.** *Science* 2000, **287**:2032-2036.
45. Coulombre AJ, Coulombre JL: **The role of intraocular pressure in the development of the chick eye: III. Ciliary body.** *Am J Ophthalmol* 1957, **44**:85-93.
46. Beebe DC: **Development of the ciliary body: a brief review.** *Trans Ophthalmol Soc U K* 1986, **105**:123-130.
47. Streeten BW: **Zonular apparatus.** In *Ocular Anatomy, Embryology, and Teratology* Edited by: Jakobiec FA. Philadelphia, Harper & Row, Publishers; 1982:331-353.
48. Croft MA, Kaufman PL, Crawford KS, Neider MW, Glasser A, Bito LZ: **Accommodation dynamics in aging rhesus monkeys.** *Am J Physiol* 1998, **275**:R1885-1897.
49. Croft MA, Glasser A, Heatley G, McDonald J, Ebbert T, Dahl DB, Nadkarni NV, Kaufman PL: **Accommodative ciliary body and lens function in rhesus monkeys, I: normal lens, zonule and ciliary body process configuration in the iridectomized eye.** *Invest Ophthalmol Vis Sci* 2006, **47**:1076-1086.
50. Moscona A: **Formation of lentoids by dissociated retinal cells of the chick embryo.** *Science* 1957, **125**:598-599.
51. Eguchi G, Okada TS: **Differentiation of lens tissue from the progeny of chick retinal pigment cells cultured in vitro: a demonstration of a switch of cell types in clonal cell culture.** *Proc Nat Acad Sci USA* 1973, **70**:1495-1499.
52. Eguchi G, Abe SI, Watanabe K: **Differentiation of lens-like structures from newt iris epithelial cells in vitro.** *Proc Nat Acad Sci USA* 1974, **71**:5052-5056.
53. Okada TS, Itoh Y, Watanabe K, Eguchi G: **Differentiation of lens in cultures of neural retinal cells of chick embryos.** *Dev Biol* 1975, **45**:318-329.
54. Yasuda K, Okada TS, Eguchi G, Hayashi M: **A demonstration of a switch of cell type in human fetal eye tissues in vitro: pigmented cells of the iris or the retina can transdifferentiate into lens.** *Exp Eye Res* 1978, **26**:591-595.
55. Stone LS: **The regeneration of the crystalline lens.** *Invest Ophthalmol* 1965, **4**:420-432.
56. Tsonis PA, Rio-Tsonis KD: **Lens and retina regeneration: transdifferentiation, stem cells and clinical applications.** *Exp Eye Res* 2004, **78**:161-172.
57. Grogg MVV, Call MK, Okamoto M, Vergara MN, Rio-Tsonis KD, Tsonis PA: **BMP inhibition-driven regulation of six-3 underlies induction of newt lens regeneration.** *Nature* 2005, **438**:858-862.
58. Eguchi G, Kodama R: **Transdifferentiation.** *Curr Opin Cell Biol* 1993, **5**:1023-1028.
59. Kinoshita S, Friend J, Thoft RA: **Sex chromatin of donor corneal epithelium in rabbits.** *Invest Ophthalmol Vis Sci* 1981, **21**:434-441.
60. Buck RC: **Measurement of centripetal migration of normal corneal epithelial cells in the mouse.** *Invest Ophthalmol Vis Sci* 1985, **26**:1296-1299.
61. Collinson JM, Morris L, Reid AI, Ramaesh T, Keighren MA, Flockhart JH, Hill RE, Tan SS, Ramaesh K, Dhillon B, West JD: **Clonal analysis of patterns of growth, stem cell activity, and cell movement during the development and maintenance of the murine corneal epithelium.** *Dev Dyn* 2002, **224**:432-440.
62. Raviola G: **The fine structure of the ciliary zonule and ciliary epithelium with special regard to the organization and insertion of the zonular fibrils.** *Invest Ophthalmol* 1971, **10**:851-869.
63. Rohen JW: **Scanning electron microscope studies of the zonular apparatus in human and monkey eyes.** *Invest Ophthalmol Vis Sci* 1979, **18**:133-144.
64. Markwald RR, Fitzharris TP, Bolender DL, Bernanke DH: **Structural analysis of cell:matrix association during the morphogenesis of atrioventricular cushion tissue.** *Dev Biol* 1979, **69**:634-654.
65. Fukushi S, Spiro RG: **The lens Capsule: sugar and amino acid composition.** *J Biol Chem* 1969, **244**:2041-2048.
66. Yao R, Alcalá J, Maisel H: **Developmental changes in glycoconjugate composition during chick lens morphogenesis.** *Exp Eye Res* 1996, **62**:419-431.
67. Ziebarth NM, Manns F, Uhlhorn SR, Venkatraman AS, Parel JM: **Non-contact optical measurement of lens capsule thickness in human, monkey, and rabbit postmortem eyes.** *Invest Ophthalmol Vis Sci* 2005, **46**:1690-1697.
68. Barraquer RI, Michael R, Abreu R, Lamarca J, Tresserra F: **Human lens capsule thickness as a function of age and location along the sagittal lens perimeter.** *Invest Ophthalmol Vis Sci* 2006, **47**:2053-2060.
69. Cohen AI: **The electron microscopy of the normal human lens.** *Invest Ophthalmol* 1965, **4**:433-446.
70. Streeten BVV: **The zonular insertion: a scanning electron microscopic study.** *Invest Ophthalmol Vis Sci* 1977, **16**:364-375.
71. Schaumberg DA, Dana MR, Christen WG, Glynn RJ: **A systematic overview of the incidence of posterior capsule opacification.** *Ophthalmology* 1998, **105**:1213-1221.

72. Sharma N, Pushker N, Dada T, Vajpayee RB, Dada VK: **Complications of pediatric cataract surgery and intraocular lens implantation.** *J Cataract Refract Surg* 1999, **25**:1585-1588.
73. Robb RM: **Congenital and childhood cataracts.** In *Principles and Practice of Ophthalmology Volume 5*. 2nd edition. Edited by: Albert DM and Jakobiec FA. Philadelphia, W B Saunders; 2000:4399-4405.
74. McDonnell PJ, Zarbin MA, Green R: **Posterior capsule opacification in pseudophakic eyes.** *Ophthalmology* 1983, **90**:1548-1553.
75. Apple DJ, Solomon KD, Tetz MR, Assia EI, Holland EY, Legler UFC, Tsai JC, Casteneda VE, Hoggatt JP, Kostick AMP: **Posterior capsule opacification.** *Surv Ophthalmol* 1992, **37**:73-116.
76. Marcantonio JM, Rakic JM, Vrensen GFJM, Duncan G: **Lens cell populations studied in human donor capsular bags with implanted intraocular lenses.** *Invest Ophthalmol Vis Sci* 2000, **41**:1130-1141.
77. Wormstone M: **Posterior capsule opacification: a cell biological perspective.** *Exp Eye Res* 2002, **74**:337-347.
78. Odrich MG, Hall SJ, Worgul BV, Trokel SL, Rini FJ: **Posterior capsule opacification: experimental analyses.** *Ophthalmic Res* 1985, **17**:75-84.
79. Kappelhof JP, Vrensen GF: **The pathology of after-cataract: a minireview.** *Acta Ophthalmol Suppl* 1992:13-24.
80. Rafferty NS, Rafferty KA: **Lens cytoskeleton and after-cataract.** *Acta Ophthalmol Suppl* 1992:34-45.
81. Hogan MJ, Alvarado JA, Weddell JE: **The cornea.** In *Histology of the Human Eye: An Atlas and Textbook* Philadelphia, W B Saunders; 1971:55-111.
82. Dua HS, Gomes JAP, Singh A: **Corneal epithelial wound healing.** *Br J Ophthalmol* 1994, **78**(5):401-8.
83. Lu L, Reinach PS, Kao VVW: **Corneal epithelial wound healing.** *Exp Biol Med (Maywood)* 2001, **226**:653-664.
84. Schermer A, Galvin S, Sun TT: **Differentiation-related expression of a major 64K corneal keratin in vivo and in culture suggests limbal location of corneal epithelial stem cells.** *J Cell Biol* 1986, **103**:49-62.
85. Kenyon KR, Tseng SCG: **Limbal autograft transplantation for ocular surface disorders.** *Ophthalmology* 1989, **96**:709-723.
86. Lavker RM, Tseng SCG, Sun TT: **Corneal epithelial stem cells at the limbus: looking at some old problems from a new angle.** *Exp Eye Res* 2004, **78**:433-446.
87. Thoft RA, Wiley LA, Sundarraj N: **The multipotential cells of the limbus.** *Eye* 1989, **3**:109-113.
88. Kruse FE, Chen JY, Tsai RJF, Tseng SCG: **Conjunctival transdifferentiation is due to the incomplete removal of limbal basal epithelium.** *Invest Ophthalmol Vis Sci* 1990, **31**:1903-1913.
89. German MJ, Pollock HM, Zhao B, Tobin MJ, Hammiche A, Bentley A, Cooper LJ, Martin FL, Fullwood NJ: **Characterization of putative stem cell populations in the cornea using synchrotron infrared microspectroscopy.** *Invest Ophthalmol Vis Sci* 2006, **47**:2417-2422.
90. Waring GO III, Roth AM, Ekins MB: **Clinical and pathologic description of 17 cases of corneal intraepithelial neoplasia.** *Am J Ophthalmol* 1984, **97**:547-559.
91. Farah S, Baum TD, Conlon MR, Alfonso EC, Starck T, Albert DM: **Tumors of the cornea and conjunctiva.** In *Principles and Practice of Ophthalmology Volume 2*. 2nd edition. Edited by: Albert DM and Jakobiec FA. Philadelphia, W B Saunders; 2000:1002-1019.

Publish with **BioMed Central** and every scientist can read your work free of charge

"BioMed Central will be the most significant development for disseminating the results of biomedical research in our lifetime."

Sir Paul Nurse, Cancer Research UK

Your research papers will be:

- available free of charge to the entire biomedical community
- peer reviewed and published immediately upon acceptance
- cited in PubMed and archived on PubMed Central
- yours — you keep the copyright

Submit your manuscript here:
http://www.biomedcentral.com/info/publishing_adv.asp

